

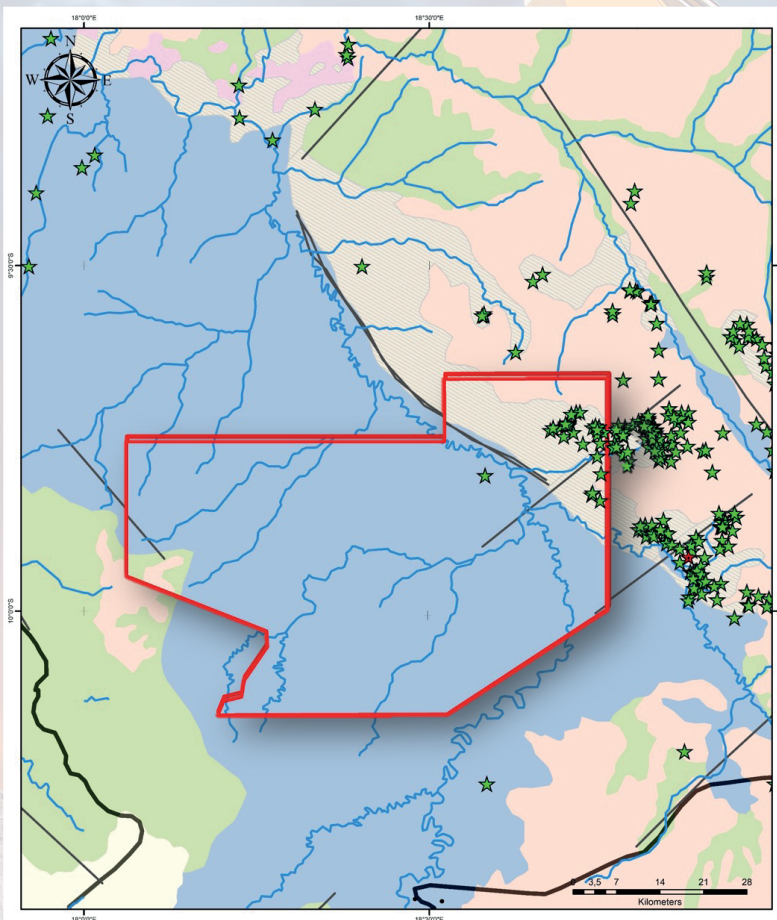
TECHNICAL SHEET

CHITAMBA CONCESSION



ENDIAMA

ANGOLAN NATIONAL DIAMOND COMPANY



LEGEND

- Mineral Evidence
- TEXT**
- Gold
- ★ Diamond
- ★ Kimberlite Occurrences
- Chitamba
- Provinces
- Water Lines
- Secondary Failures

GEOLOGY OF ANGOLA

- Major Units
- Quaternary
 - Neogene - Quaternary
 - Neogene
 - Paleogene - Neogene
 - Paleogene
 - Paleogene - Cretaceous
 - Cretaceous
 - Jurassic
 - Super Group Karro (Permian-Jurassic)
 - super Group Congo Occidental
 - Upper Proterozoic
 - Lower Proterozoic
 - Upper Archean
 - Lower Archean
 - Archean



LOCATION

Lunda Norte Province,
Xá - Muteba Municipality
Area of approx. 3000 Km²



CLIMATE & VEGETATION

Humid subtropical:
Savanna-type forests
and along the valleys
by a very dense forest.



POTENTIAL

Alluvial deposits identified
in the area;
Located within the Lucapa
graben, Cuango basin, a
good diamond collector;
Numerous occurrences of
kimberlites within the area.